



SonicWALL Email Security for the Enterprise

EMAIL SECURITY

High Performance and Easy-to-Use E-mail Security

The face of e-mail threats has evolved dramatically in recent years. Previously, organizations' primary concerns were the high volume and destructive nature of spam and virus attacks. The increased sophistication and complexity of inbound e-mail threats and the emergence of regulatory compliance laws demand increased protection of e-mail and strict management of confidential information. Distributed point-solutions can no longer withstand the increased burden of e-mail security requirements. Organizations need a powerful, integrated, yet easy-to-use solution that can effectively prevent bi-directional e-mail threats.

Ideal for the enterprise environment, SonicWALL Email Security is a self-running, self-updating solution, delivering powerful protection against spam, virus and phishing attacks in addition to preventing confidential information leaks and violations of regulatory compliance laws such as HIPAA, GLBA and SOX. SonicWALL Email Security solutions provide powerful protection without complexity.

Features and Benefits

Inbound and outbound e-mail management capabilities bi-directionally monitor content passing through the SMTP gateway. Inbound e-mail threats like spam, viruses and phishing attacks can be stopped before they invade the network while outbound e-mail content can be carefully managed, preventing confidential information leaks.

Content compliance capabilities help organizations adhere to regulatory and e-mail compliance requirements and enforce organizational e-mail policies. SonicWALL Email Security intelligently identifies e-mails that violate compliance policies, monitors and reports the problem and applies multiple enforcement actions.

Award-winning anti-spam engine coupled with end-to-end attack monitoring ensures the most effective and current protection from spam attacks.

Corporate phishing protection ensures that organizations are protected from identity theft. SonicWALL delivers the only solution that uniquely identifies phishing e-mails and enables administrators to handle these messages separately.

Time Zero Virus Technology protects customers from the time a virus outbreak occurs until the time a signature update is available. SonicWALL provides additional layers of protection by partnering with McAfee and Kaspersky Labs for signature updates.

DHA, DoS and zombie attack protection combined with SonicWALL's anti-spam, anti-phishing and anti-virus capabilities delivers a robust solution for stopping all e-mail threats. With an integrated LDAP/Exchange Accelerator, the security and performance of e-mail systems are never compromised.

End-user spam management allows easy delegation of spam management to end users, reducing false positives and lessening the load on IT.

Seamless LDAP integration ensures that SonicWALL Email Security solutions automatically synchronize with directories for single sign-on and automatic management of e-mail addresses and accounts. Additionally, policies, users and groups can be managed based on existing LDAP information.

Robust reporting provides easily customizable, system-wide and granular reporting, including information on attack types, solution effectiveness and system performance.

High performance redundant deployments are easily enabled. SonicWALL's unique preemptive scanning MTA is 40 – 290% faster than competing products and can be deployed in multiple distributed Remote Analyzers and centralized management through a Web-based Control Center.

Rapid Installation and ease-of-management drastically reduces the burden on IT departments to implement and manage a comprehensive e-mail security solution.

- **Inbound and outbound e-mail management capabilities**
- **Content compliance capabilities**
- **Award-winning anti-spam engine**
- **Corporate phishing protection**
- **Time Zero Virus Technology**
- **DHA, DoS and zombie attack protection**
- **End-user spam management**
- **Seamless LDAP integration**
- **Robust reporting**
- **High performance redundant deployments**
- **Rapid Installation and ease-of-management**



SonicWALL and E-mail Compliance

All enterprise organizations are faced with the challenge of meeting e-mail compliance requirements, whether regulatory compliance from government legislation, such as HIPAA, GLBA or SOX; industry standards; or corporate compliance, such as preventing offensive e-mails or protecting intellectual property. SonicWALL Email Security identifies, monitors and applies policy to all e-mail violations, ensuring the highest level of compliance possible.

SonicWALL Email Security easily enables e-mail compliance by:

- Preventing violations of compliance laws
- Stopping leaks in confidential information
- Protecting private information
- Enforcing corporate acceptable e-mail usage policies

Powerful and

easy-to-use

e-mail threat

protection

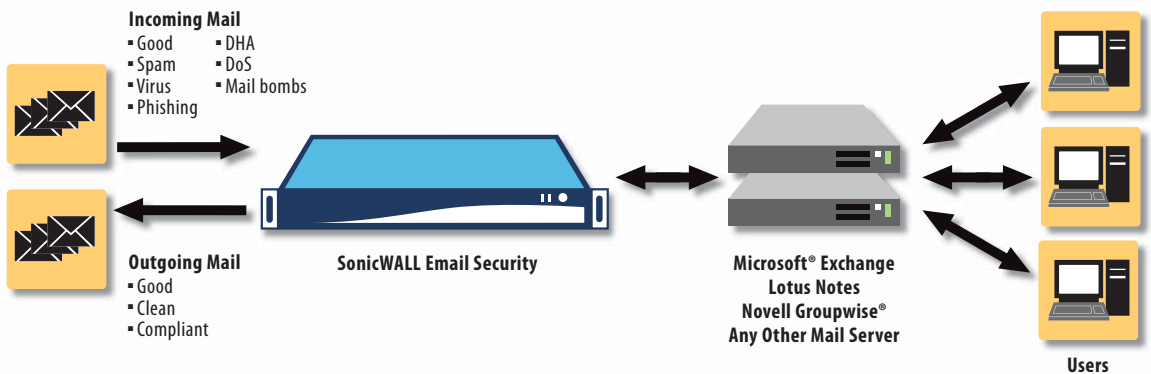
Appliance and Software Solutions

SonicWALL Email Security 6000 and 8000 Series appliances are easy-to-install, hardened SonicWALL OS-based solutions. SonicWALL Email Security Software - Enterprise is ideal for organizations that standardize on specific hardware, wish to use existing monitoring and backup systems, or just want the ultimate in deployment flexibility

Deployment of Email Security

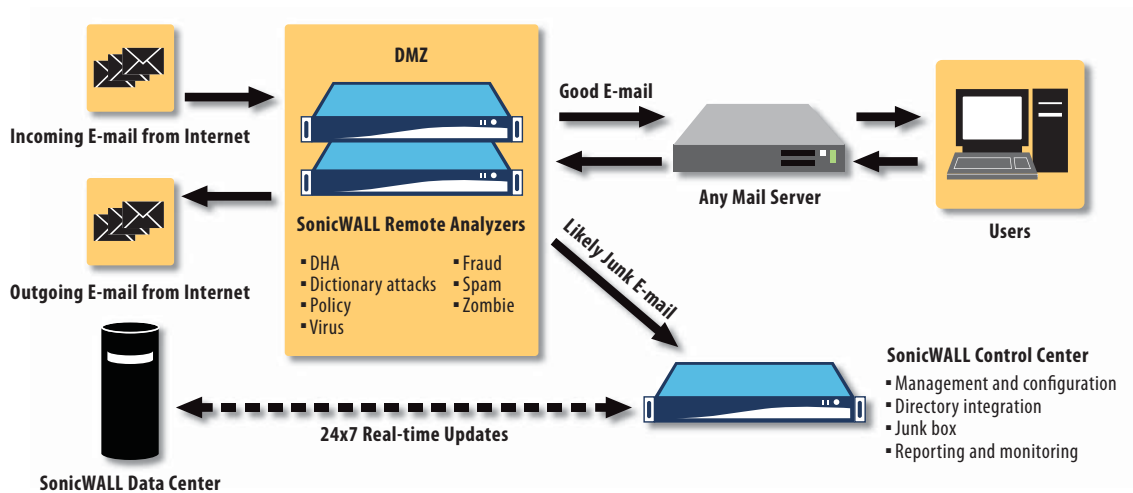
All-in-One Configuration

The easiest deployment is an all-in-one configuration where filtering and management takes place on the same server.



Split Network Architecture

For load balancing and redundancy, split network enables companies to filter at the network perimeter while providing centralized control.



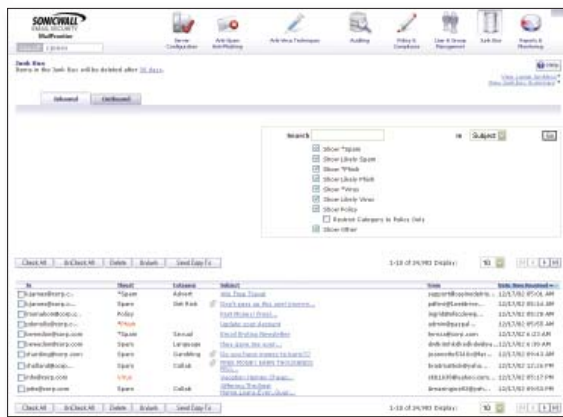
The SonicWALL Difference

Best Protection: SonicWALL Email Security provides the highest level of protection from both inbound and outbound e-mail threats by leveraging a unique end-to-end e-mail attack monitoring system.

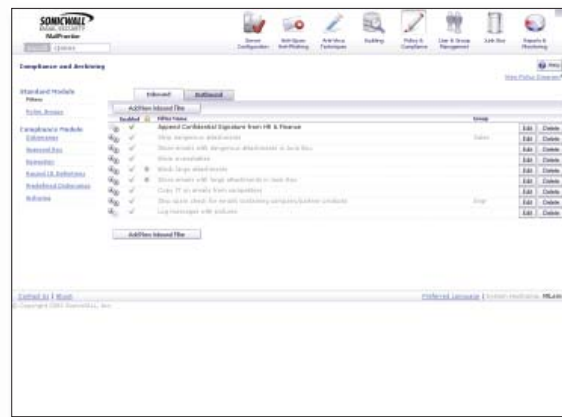
- Anti-spam
- DHA and DoS Protection
- Policy Management
- Anti-phishing
- Internal Zombie Detection
- Compliance Tools
- Anti-virus
- Time Zero Virus Protection
- Blended Threats

Effortless Control: SonicWALL ensures simple configuration, easy customization and automated maintenance, all through an easy-to-use, Web-based administrative interface.

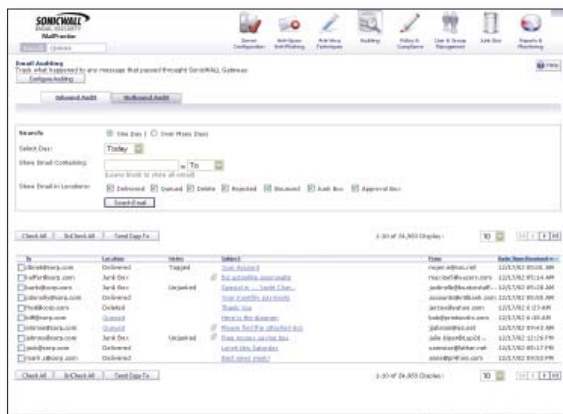
- Quick configuration in less than an hour
- Auto-update of all data and software
- LDAP integration for authentication and user management
- Streamlined LDAP-based group and end-user management and delegation of administration
- Personalized end-user quarantine and settings
- Easy auditing of any e-mail that has been routed through the systems
- Detailed reporting including information on attack types, solution effectiveness and system performance



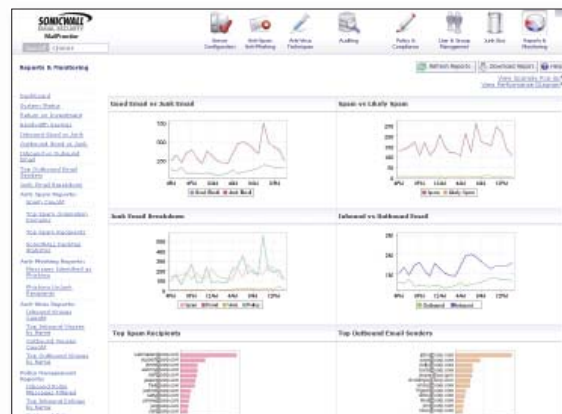
Junk Box Summary



Policy and Compliance



Auditing



Reports and Monitoring

High Performance: Using its unique pre-emptive scanning Mail Transfer Agent (MTA), SonicWALL Email Security offers breakthrough message analysis rates. With SonicWALL Email Security, fewer machines are required to process the e-mail load, resulting in reduced management complexity and lower costs.

Specifications

SonicWALL Email Security

Email Security Appliances	SMB				Enterprise	
	200	300	400	500	6000	8000
Users Licensed	50	100	250	1000	5000	5000+
Domains	Unlimited					
Operating System	Hardened SonicWALL Linux OS Appliance					
Rackmount Chassis	1U Mini	1U Mini	1U Mini	1U Mini	1U Mini	1U Fullsize
CPU	2.66GHz	2.66GHz	2.66GHz	2.66GHz	3.2GHz	2 x 3.2 GHz
RAM	1 GB	1 GB	1 GB	1 GB	2 GB	2 GB
Hard drive	80 GB	80 GB	2 x 80 GB	2 x 80 GB	2 x 160 GB	2 x 146 GB SCSI
Redundant Disk Array (RAID)			X	X	X	X
Hot Swappable Drives						X
Redundant Power Supply						X
Dimensions	16.8 x 14.0 x 1.7 in 42.67 x 35.56 x 4.32 cm	16.8 x 14.0 x 1.7 in 42.67 x 35.56 x 4.32 cm	16.8 x 14.0 x 1.7 in 42.67 x 35.56 x 4.32 cm	16.8 x 14.0 x 1.7 in 42.67 x 35.56 x 4.32 cm	16.8 x 14.0 x 1.7 in 42.67 x 35.56 x 4.32 cm	39.0 x 24.0 x 10.0 in 99.06 x 60.96 x 25.40 cm
Weight	18 lbs 8.16 kg	18 lbs 8.16 kg	19 lbs 8.62 kg	19 lbs 8.62 kg	19 lbs 8.62 kg	48 lbs 21.77 kg
WEEE Weight	13 lbs 5.90 kg	13 lbs 5.90 kg	14 lbs 6.35 kg	14 lbs 6.35 kg	14 lbs 6.35 kg	41 lbs 18.60 kg
Email Security Software	50 User	100 User	250 User	1000 User	5000 User	5000+ User
Users Licensed	50	100	250	1000	5000	5000+
Domains	Unlimited					
Operating System	Runs on Microsoft Windows 2000 Server or Microsoft Windows 2003 Server					
CPU	2.66 GHz minimum configuration					
RAM	1 GB minimum configuration					
Hard drive	40 GB minimum configuration					
Appliance and Software Features						
Threat Protection						
Inbound and outbound e-mail protection	Yes	Yes	Yes	Yes	Yes	Yes
Anti-spam effectiveness	98%+	98%+	98%+	98%+	98%+	98%+
Anti-phishing identified separately	Yes	Yes	Yes	Yes	Yes	Yes
Anti-Virus: Dual-layer Commercial	Yes	Yes	Yes	Yes	Yes	Yes
Time Zero Virus Protection	Yes	Yes	Yes	Yes	Yes	Yes
DHA, DoS, Other Attack Protection	Yes	Yes	Yes	Yes	Yes	Yes
LDAP/Exchange Accelerator	Yes	Yes	Yes	Yes	Yes	Yes
Compliance Subscription						
Robust Policy Management	Yes	Yes	Yes	Yes	Yes	Yes
Attachment Scanning	Yes	Yes	Yes	Yes	Yes	Yes
Dictionaries	Yes	Yes	Yes	Yes	Yes	Yes
Approval Boxes/Workflow	Yes	Yes	Yes	Yes	Yes	Yes
Installation and Management						
Installation	< 1 hour	< 1 hour	< 1 hour	< 1 hour	< 1 hour	< 1 hour
Management per week	< 10 min	< 10 min	< 10 min	< 10 min	< 10 min	< 10 min
Compatible with all email servers	Yes	Yes	Yes	Yes	Yes	Yes
Single sign-on	Yes	Yes	Yes	Yes	Yes	Yes
Group and user management	Yes	Yes	Yes	Yes	Yes	Yes
End user quarantine and settings	Yes	Yes	Yes	Yes	Yes	Yes
Junk Box Summary actionable email	Yes	Yes	Yes	Yes	Yes	Yes
Monitoring, Reporting and Log Management	Yes	Yes	Yes	Yes	Yes	Yes
Clustering and Remote Clustering	Yes	Yes	Yes	Yes	Yes	Yes



SonicWALL Email Security

SonicWALL Email Security 6000
01-SSC-6604

SonicWALL Email Security 8000
01-SSC-6605

SonicWALL Email Security Software-
Enterprise (5000 Users)
01-SSC-6634

SonicWALL Email Security Software-
Enterprise (5000+ Users)
01-SSC-6635

SonicWALL Email Protection
Subscription and 8x5 Support-1 year
Model 6000, 5000 Users Software
01-SSC-6664

SonicWALL Email Protection
Subscription and 8x5 Support-1 year
Model 8000, 5000+ Users Software
01-SSC-6665

SonicWALL Email Protection
Subscription and 24x7 Support-1 year
Model 6000, 5000 Users Software
01-SSC-6674

SonicWALL Email Protection
Subscription and 24x7 Support-1 year
Model 8000, 5000+ Users Software
01-SSC-6675

SonicWALL, Inc.

1143 Borregas Avenue
Sunnyvale CA 94089-1306

T +1 408.745.9600
F +1 408.745.9300

www.sonicwall.com

