



WebSense Enterprise® analysis and reporting tools provide IT administrators with uniquely powerful tools for identifying, analyzing, and reporting on Internet and desktop application activity and the risks associated with employee computing.

Recognizing the problem

How can you know if users are creating a security risk by visiting websites that secretly install malicious mobile code (MMC) or spyware? How many of your employees are engaged in instant messaging and with which tools? How much of your network bandwidth is being consumed by employees swapping files over peer-to-peer networks?

As fast as the computing environment has become more complex, the risk of harm or loss has grown even faster. As a network administrator, you need powerful and flexible analysis tools in order to make the right decisions for your organizations.

WebSense Enterprise analysis and reporting solutions

WebSense Enterprise helps identify potential problem areas with monitoring and reporting tools that offer real-time and historical views of company risks related to employee web and application usage. Using this information, IT administrators can refine Internet access and application policies to effectively reduce the risks associated with employee computing in their organizations.

The three analysis and reporting modules are:

WebSense Enterprise Real-Time Analyzer™ – An interface for IT administrators that provides a real-time view of network activity within the last 24 hours.

WebSense Enterprise Explorer – An interface for HR managers, business managers, and IT administrators to display historical Internet access data and analyze potential employee issues.

WebSense Enterprise Reporter – A full-featured reporting engine with predefined and customizable report templates for viewing detailed historical Internet and application access data.

WebSense Enterprise Real-Time Analyzer

The immediate and real-time monitoring capabilities of Real-Time Analyzer provide answers to the following types of questions:

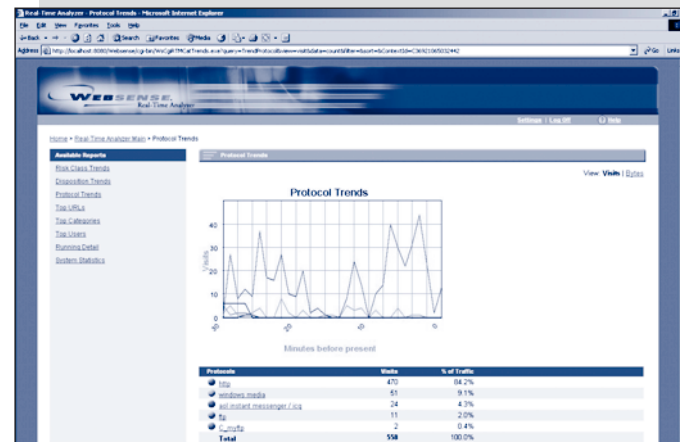
- Who is slowing down my network right at this moment?
- What did my Internet access traffic look like in the last hour? And in the last 12 hours?

Real-Time Analyzer is an out-of-the-box monitor for WebSense Enterprise where network administrators can monitor current and recent network traffic from Internet activity.

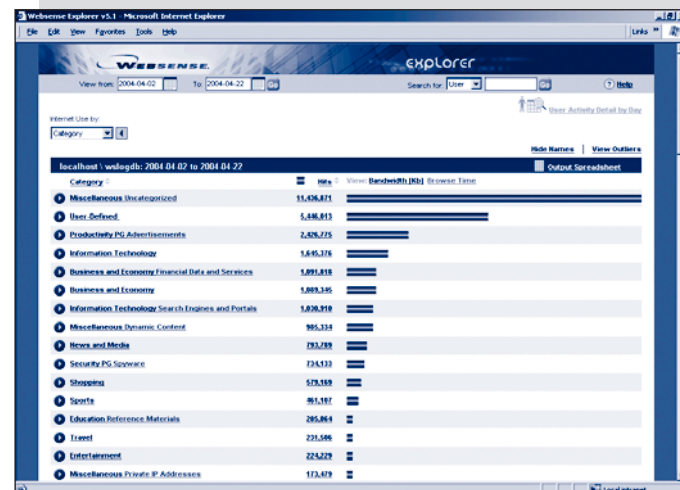
WebSense Enterprise® Real-Time Analyzer™ WebSense Enterprise® Explorer WebSense Enterprise® Reporter

WebSense Enterprise provides you with analysis and reporting capabilities that allow you to:

- Identify your organizational risk levels for productivity, security, legal liability, and network bandwidth loss.
- Detect the possible presence of malicious mobile code, spyware, or hacking tools in your network.
- Discover the use of peer-to-peer file sharing and instant messaging in your organization.
- Refine your Internet and application use policies with insight from powerful reporting and forensic tools.



View a real-time window into network activity with WebSense Enterprise Real-Time Analyzer.



Gain easy access to valuable information on employee web and application usage with WebSense Enterprise Explorer.

Key features

Browser-based – Gain access from any PC on the network with a web browser interface.

Memory-based – View a real-time window into network activity with live streaming data.

User-friendly – Take advantage of easy-to-use, click-through data analysis.

System statistics – Identify problem areas, from higher level risk classes to specific protocols.

Websense Enterprise Explorer

The powerful drill-down capabilities of Explorer help answer the following types of questions:

- Have any employees visited hacking websites or launched employee hacking applications in the last three months?
- How much bandwidth is the network losing to streaming media use?
- Has anyone in my network visited a site with spyware or malicious mobile code over a specific time frame?

Explorer is web-based and easy for HR and business managers to use, freeing up IT administrators for other administrative duties.

It's also fast and flexible. By minimizing the need for IT to run batch reports, Explorer provides access to the most relevant web usage data in a matter of seconds. It presents data in a clear drill-down format and allows the manager to quickly analyze employee activity and detect enterprise risks.

Key features

Ease-of-use – Explorer is designed to be used by non-technical personnel such as HR managers.

Immediate web-based information availability – Access information when you need it from a browser anywhere on your network.

Interactive, point-and-click reporting – Minimize the need for predefined report templates and batch reporting. Allow HR and business managers to run their own reports.

Statistical analysis – Identify those users with the widest variance in web usage.

Access authorization – Ensure only those with authority have password access to view information. Role-based reporting frees up IT resources.

Privacy protection – Hide individual user data from unauthorized viewing through an authentication layer and limit administration views to authorized departments.

Websense Enterprise Reporter

Websense Enterprise Reporter offers custom and predefined reporting of historical Internet and application access by employees. With more than 80 report templates, IT administrators can detect trends and surfing patterns that may be affecting productivity and bandwidth availability or creating security risks and legal liability for the organization.

Key features

Scheduled execution – Run reports at preset intervals such as daily, weekly, monthly, or quarterly.

Email distribution – Set up reports to be distributed automatically by email to specified recipients.

Predefined report templates – Choose from more than 80 predefined report templates with the most useful data for detecting problems with Internet and application access.

Custom reports – Tailor the templates to build your own reports.

How they work with Websense Enterprise

Real-Time Analyzer acts as a real-time analysis and monitoring tool for Websense Enterprise. Simply enter the network address of the Websense Enterprise server that you would like to monitor using the Real-Time Analyzer's browser-based interface and start getting insight into your network traffic immediately.

Explorer and Reporter both leverage the logging capabilities of Websense Enterprise. Depending on the volume of activity, the reporting components may be deployed on the same server as Websense Enterprise or on a separate server.

Explorer creates summary information from the data stored in the Log Database and presents it to users via the browser. Reporter uses a Windows®-based client that directly accesses the Log Database to run batch reports.

Websense Enterprise system requirements

Explorer:

- *Web Server*: MS IIS 4.0 or higher, or Apache v2.0.36 or higher
- *Browser*: Internet Explorer v5.5 or higher
- *Log Server*: Windows® 2003 Server, Windows® 2000 Server (SP3), Solaris 8.9, Red Hat Linux 8 - 9
- *Log Database Microsoft®*: MSDE or Microsoft® SQL Server, MySQL v4.0x

Reporter:

- *Log Server*: Windows® 2003 Server, Windows® 2000 Server (SP3)
- *Log Database Microsoft®*: MSDE or Microsoft® SQL Server
- *Client*: Most Windows® Platforms

Download a free, fully-functional 30-day evaluation at www.websense.com/downloads today!

Websense Inc.
San Diego, CA USA
tel 800.723.1166
tel +44 (0)1932. 796001
www.websense.com

Websense UK
Chertsey, England
tel +44 (0)1932. 796001
www.websense.co.uk

Websense France
Paris, France
tel +33 (0)15660. 5814
www.websense.fr

Websense Germany
Munich, Germany
tel +49 (0)89 24445. 4005
www.websense.de

Websense Japan
Tokyo, Japan
tel +813.5322.1335
www.websense.co.jp

Websense Australia
Sydney, Australia
tel +61 2 9006. 1621
www.websense.com.au

Websense Greater China
Hong Kong
tel +852.2855.8811
www.chinese.websense.com
www.prc.websense.com

Websense Latin America
Sao Paulo, Brazil
tel +55.11.4612.0798
www.espanol.websense.com
www.portugues.websense.com